



## *Message from the Headmaster*



May 27, 2009

Dear Family and Friends of Prince of Peace Christian School,

It is hard to believe that our school year is nearing an end! What a year of change it has been for our school and for our students. I pray that it has been a positive year for you and your children. Thank you for the partnership that we share.

### **Graduation**

I would like to invite you to join us as we recognize and celebrate our Class of 2009. The service is scheduled for May 29, at 7:00 p.m. in the Prince of Peace Lutheran Church Sanctuary. To date, our 37 graduates have been awarded more than \$2,000,000 in academic and athletic scholarships. All graduating seniors plan to continue their education at colleges and universities in Texas and throughout the United States. We celebrate with and for our Seniors and pray God's richest blessing upon them as they leave our school.



I hope that you will also be able to attend the Recognition Service for our 8<sup>th</sup> graders on June 4<sup>th</sup> at 8:30 a.m., followed by Closing Chapel for 1<sup>st</sup>-5<sup>th</sup> grade students at 10:30 a.m. The Middle School will graduate our largest 8<sup>th</sup> grade class to date, 72 students. We celebrate and look forward to nine of the top ten 8<sup>th</sup> graders returning next year to be part of the Prince of Peace High School 9<sup>th</sup> Grade Class.

## **Enrollment for 2009-2010**

Enrollment for next school year continues to grow slowly after a record number of students re-enrolled. However, we are seeing the impact of the economy as the number of new student applications is down from last year by 50 students. Currently, the Early Learning Center (ELC) is within four students of capacity, and our middle and high schools will maintain current enrollment or grow slightly. Our numbers are down in Preschool 3, Kindergarten, and 4<sup>th</sup> Grade. This being the case, the School Board affirmed the decision to reduce the number of Kindergarten classes from four to three, and to reduce 4<sup>th</sup> Grade from three sections to two. Preschool 3's will be closely monitored, as those spots historically don't fill until late summer. In addition, the proposed 3% compensation increase for faculty and staff has been removed as part of our budget adjustments.

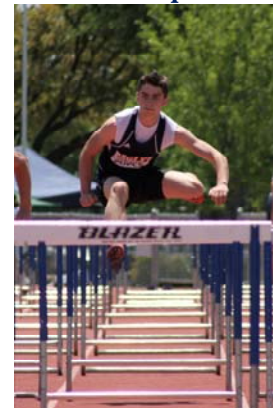
## **Construction Update**



Progress! Completion! We celebrate the completion of the Early Learning Center on time and on budget. A few items remain from the punch list but we were able to occupy the building in early April. A special thanks to Lynn Keckonen, Mindy Pfeil, Brenda Porter, and the staff of ELC and Preschool for their hard work and leadership.

Work continues on the Fine Arts Center. The project remains on budget, but slightly behind schedule. We are still being advised to expect occupancy of the classrooms and offices in August and occupancy of the auditorium in September. Over the next few weeks the exterior will be completed – stone work, doors, glass, and paint. While that is happening, interior finish out will be continuing – framing of walls, electrical work and drywall.

What's next? Work continues on development of an athletic complex for use during physical education classes and for athletics. Our School Board and Church Council recently approved moving forward with a modified plan which includes a multi-purpose playing field, track, and 4 tennis courts. While the piers and electricity would be put in place, the light standards have been removed from this



phase. The access road from Midway, a new parking area to the west, completion of the lights, and permanent bleachers and restrooms have been rescheduled for Phase 2.

Just as the Early Learning Center and Fine Arts projects, the athletic expansion project must be approved by the Prince of Peace Lutheran Church Congregation. Please continue to pray that God would direct our efforts as we seek to expand our facilities for His purpose and ministry.

A complete description of the project, including rationale of the modifications and funding plan is available for review. If you would like a copy of the plans or have questions, please call my office directly.

### **School Survey**



Thanks to each of you who completed the school survey last month. We had 440 visits to the site, with 226 on-line surveys completed, as well as six hard copies returned. It is always useful information, as it serves as affirmation for many of the positive things happening here. It also helps identify areas of concern which need attention and action. The results have been compiled and are currently being reviewed by our school principals.

Our families ranked from 1 (most important) to 5 (least important), the following:

1. Academics
2. Faith
3. Relationships
4. Extra-curricular
5. Community

Most important things the school offers beyond academics:

1. Children's friendships
2. Family friendships
3. Feeling of belonging
4. Faculty

I am grateful for the most suggested improvement – after-school carpool line between the High School and Lower School buildings. The safety of our students is a priority. We have increased staff supervision and responsibilities over the last few weeks. The principals and teachers have been asked to review current plans and make changes for next year. We also appreciate you refraining from using your cell phone while on campus, especially in carpool when cars and children are in motion.

The results will continue to be reviewed for areas to celebrate and areas to correct, and will be shared with our School Board as part of their annual planning meeting in August. Changes requiring immediate attention will be incorporated into the Strategic Plan for action in 2009-2010.

My first letter to you during this year was about change. We all like reaching the destination, but sometimes the trip is hard. Thank you for making this trip with us this year. Thank you for the continued trust and partnership we share. I pray that God will continue to bless you, our children, and our school.

Sincerely,



Chris J. Hahn  
Headmaster

Prince of Peace Christian School & Early Learning Center  
4000 Midway Road  
Carrollton, Texas 75007-1903

972-447-9887

[chris.hahn@princeofpeace.org](mailto:chris.hahn@princeofpeace.org)

[www.princeofpeace.org](http://www.princeofpeace.org)

**Belong Grow Become**

